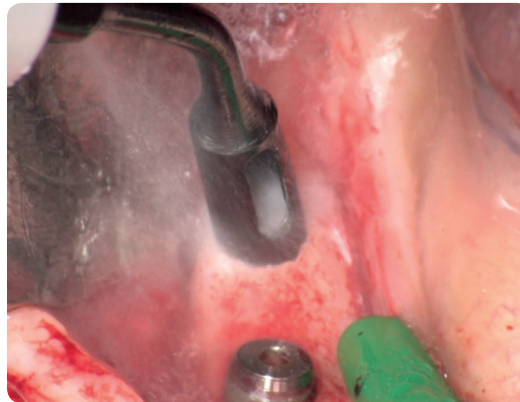
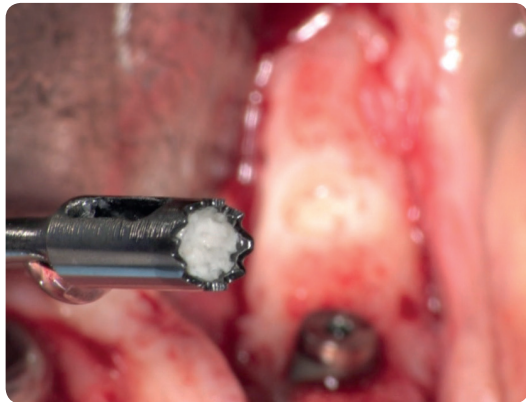
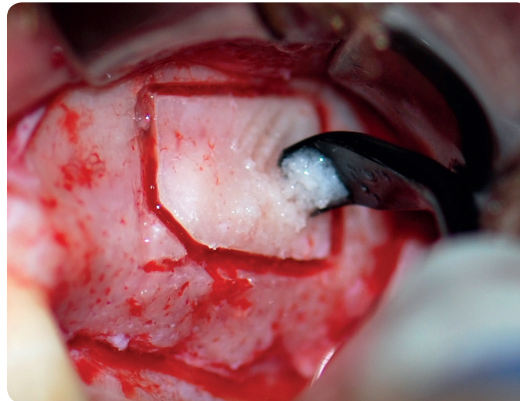


BONE SCRAPING & PICKING



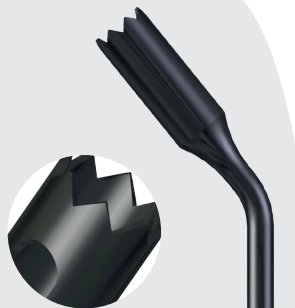
ES034T

Sp: 0,5 mm
Ø int: 2,2 Ø est 3,2 mm
Lo: 10 mm
La: 17 mm

Forma a coroncina utilizzata per carotaggio. **SEGHETTATA.**
Crown shaped tip for core drilling
SAW SHAPED.

U (1)	40
V (2)	80
P (3)	100
MAX POWER (4)	50

BONE SCRAPING & PICKING



ES035T

Sp: 0,5 mm
 ø int: 3,2 ø est: 4,2 mm
 Lo: 10 mm
 La: 17 mm

Forma a coroncina utilizzata per carotaggio. **SEGHETTATA.**
Crown shaped tip for core drilling SAW SHAPED.

U (1)	40
V (2)	80
P (3)	100
MAX POWER (4)	50



ES07ST

Sp: 0,6 mm
 Lo: 0,3 mm
 La: 10 mm

Scalpello trapezoidale per prelievo chips ossee. **SEGHETTATA e AFFILATA.**
Trapezium shaped scalpel for biopsy. SHARPENED.

U (1)	40
V (2)	80
P (3)	001
MAX POWER (4)	60



ES010T

Sp: 1,35
 ø 4,8 mm
 Lo: 7,4 mm
 La: 14 mm

Scalpello tondo per rimodellamento e prelievo chips ossee. **AFFILATA.**
Round scalpel for remodelling and biopsy. SHARPENED.

U (1)	40
V (2)	80
P (3)	001
MAX POWER (4)	70



ES001T

Sp: 0,6 mm
 Lo: 3 mm
 La: 10 mm

Scalpello trapezoidale per rimodellamento e prelievo chips ossee. **AFFILATA.**
Trapezium shaped for remodelling and biopsy. SHARPENED.

U (1)	40
V (2)	80
P (3)	001
MAX POWER (4)	70

(1) U: POTENZA CONSIGLIATA *SUGGESTED POWER* (2) V: VIBRAZIONE CONSIGLIATA *SUGGESTED VIBRA* (3) P: PORTATA POMPA NB: consigliamo a 100 per raffreddamento osso *WATER PUMP NB: suggested at 100 for bone cooling*
 (4) MAX POWER: potenza massima a cui è possibile utilizzare l'inserto *MAX POWER: maximum power which can be used with the insert.*

