



**JDENTALCARE**

*just smile*

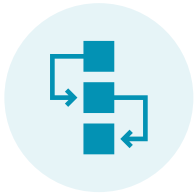
# **FULL ARCH KIT**

*The ultimate kit for bone preparation in full arch treatment*



# A simple protocol for regular, functional and biologically predictable bone management.

Proper preparation of the bone is a key step in Full Arch rehabilitations. A regular, smooth and well-levelled bone profile allows optimal soft tissue management, it can improve prosthetic stability and reduces the risk of post-operative complications. The Full Arch kit has been designed to guide the clinician through a controlled and sequential workflow, ensuring precise, progressive and predictable bone shaping.



**Simple, predictable workflow**  
for controlled, step-by-step  
bone shaping



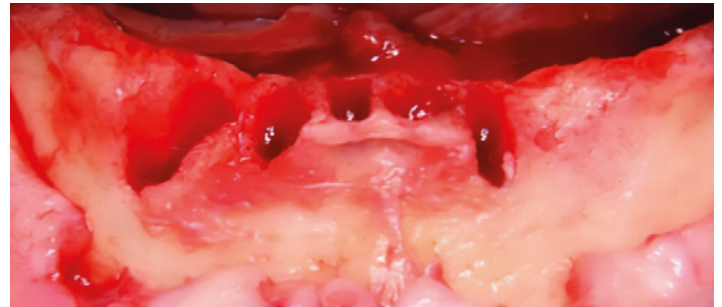
**Smooth, level bone profile**  
supports soft-tissue management  
and prosthetic stability



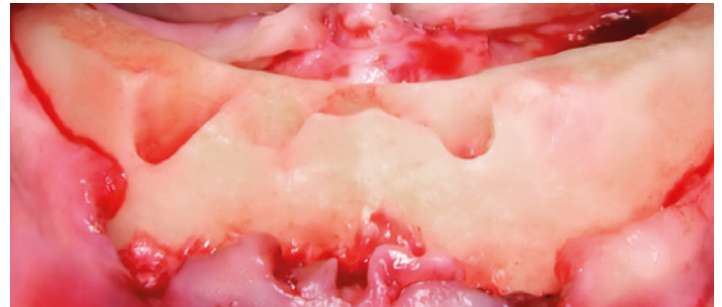
**4-drill sequence**  
with a defined role to reach a  
well-finished bone surface



**Final diamond polishing**  
delivers a smooth surface that can  
promote the biological healing



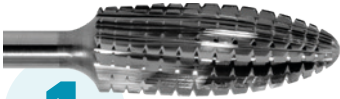
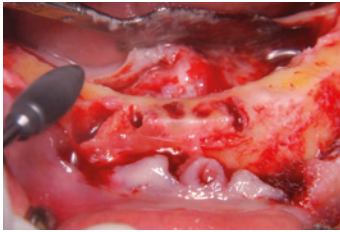
**BEFORE**



**AFTER**

# Full Arch Kit Protocol

The Full Arch kit is used following a specific sequence. Each drill has a defined role and prepares the part to be treated for the next stage, allowing the doctor to obtain a uniform, correctly shaped and well-finished bone surface. For all the steps described below, the maximum speed for the instruments is 2000 rpm.

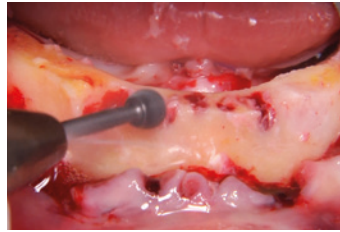


1

## BONE LEVELING DRILL

### Bone level determination and flattening

The bone levelling drill is used first to determine the desired bone level. It allows the bone to be flattened in a controlled manner until a uniform bone surface is achieved, bringing the height of the anterior and posterior bone to the same level.

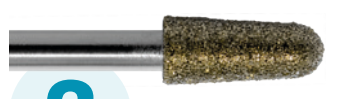
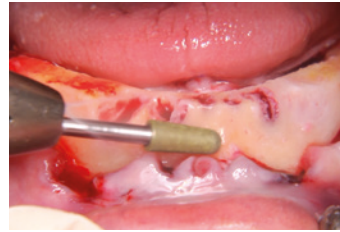


2

## BONE SPHERICAL DRILL

### Removal of residual tissues

Once the bone plane has been defined, the bone spherical drill is used to remove coarse periosteal residues and residual granulation tissue from the bone surface. With this drill, the periosteum is quickly detached from the bone, leaving a clean and well-prepared surface.

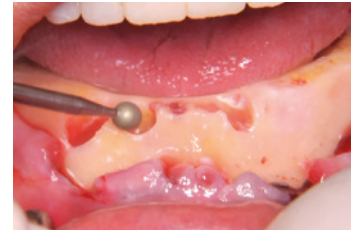


3

## BONE DIAMOND CONICAL DRILL

### Rounding of bone contours

The Bone diamond conical drill is used to round the vestibular and lingual or palatal bone surfaces. This step eliminates sharp edges and irregularities created during the flattening phase, improving bone contour continuity.



4

## BONE DIAMOND SPHERICAL DRILL

### Final smoothing

The final step involves the use of the diamond round drill for bone smoothing. This drill is used to perform the final rounding and obtain a smooth, uniform bone surface that can promote biological healing.

## Bone Reduction Drills:

---

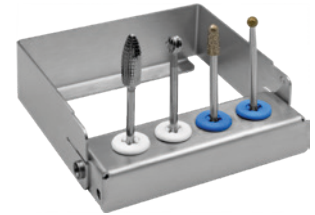
|           |                                 |
|-----------|---------------------------------|
| JDBLDR    | JD Bone Leveling Drill          |
| JDBLSF    | JD Bone Spherical Drill Ø 5.0   |
| JDBLDIASF | JD Bone Diamond Spherical Drill |
| JDBLDIAC  | JD Bone Diamond Conical Drill   |



## Full Arch Kit:

---

|         |               |
|---------|---------------|
| JDFABRK | Full Arch Kit |
|---------|---------------|



JDentalCare, the JDentalCare logo and other trademarks mentioned in this document are, excluding specifically mentioned exceptions, trademarks property of JDentalCare.

The images of the products represented in this brochure are not necessarily to scale.

Note: Not all products manufactured by JDentalCare and represented in this brochure have been regulatory cleared/released for sale in all countries and/or have been licensed in accordance with FDA Rules and Regulations.

For more information about current product assortment and availability, please contact your local JDentalCare distributor. For prescription only.

Caution: Federal (US) law restricts this device to sale by or on the other for a licensed dentist.

See instructions for use for more information such as indications, warnings, precaution and contraindications.